

Standard Paper

Canoparmelia texana (Parmeliaceae, Ascomycota) consists of two independent lineages

Paul M. Kirika¹, H. Thorsten Lumbsch², Elisa Garrido Huéscar³, Taylor S. Quedensley⁴ and Pradeep K. Divakar³ 

¹Botany Department, EA Herbarium, National Museums of Kenya, P.O. Box 40658-00100, Nairobi, Kenya; ²Science & Education, The Field Museum, 1400 S. Lake Shore Drive, Chicago, IL 60605, USA; ³Departamento de Farmacología, Farmacognosia y Botánica, Facultad de Farmacia, Universidad Complutense de Madrid, Madrid 28040, Spain and ⁴Department of Biology, Texas Christian University, 2800 S. University Drive, Fort Worth, TX 76129, USA

Abstract

Recent studies have demonstrated that species boundaries among the lichen-forming fungi are in need of revision with the discovery of cryptic species in numerous clades, especially in parmelioid lichens. Here we focus on addressing the species boundaries in *Canoparmelia texana*, a sorediate species with a pantropical distribution that extends into temperate regions. We extracted DNA sequences of the nuclear ribosomal internal transcribed spacer region (ITS), large subunit (nuLSU) and mitochondrial small subunit (mtSSU) from samples mostly collected in Kenya, and analyzed them in a phylogenetic framework. We illustrate that our samples of the species as currently circumscribed do not form a monophyletic group but fall into two distinct clades, with the apotheciate *C. nairobiensis* nested within. Both of the discovered lineages have a wide distributional range and are common in Kenya, and *Parmelia albaniensis* C. W. Dodge is resurrected to accommodate one of the clades; consequently a new combination, *Canoparmelia albaniensis* (C. W. Dodge) Divakar & Kirika comb. nov., is proposed.

Key words: Africa, biodiversity, cryptic species, lichen, molecular systematics, parmelioid lichens, taxonomy

(Accepted 7 March 2022)

Introduction

Delimitation of species in lichen-forming fungi has changed dramatically with the availability of DNA sequence data (reviewed in Crespo & Lumbsch 2010; Lumbsch & Leavitt 2011; Leavitt *et al.* 2015). Within the *Parmeliaceae*, the largest family of lichen-forming fungi that currently includes *c.* 2800 species worldwide (Kraichak *et al.* 2018), numerous cryptic lineages have been detected. In fact, the estimate by Crespo & Lumbsch (2010) of 80 cryptic lineages in parmelioid lichens hidden under widely distributed species seems, about a decade later, too conservative. Recently there has been an increased interest in improving the understanding of species delimitation in tropical lineages, resulting in the discovery and description of new clades, primarily based on molecular data (Parnmen *et al.* 2012; Moncada *et al.* 2013; Kirika *et al.* 2016a, b, 2017, 2019; Singh *et al.* 2018). Given that tropical regions are biodiversity hot spots and are among the most species-rich areas for lichenized fungi, a better understanding of the delimitation of species in the tropics is crucial for gaining insight into global fungal diversity (Hawksworth 2012; Hawksworth & Lücking 2017).

Canoparmelia Elix & Hale is a medium-sized genus consisting of *c.* 40 species in the parmelioid group, belonging to the parmotremond clade (Crespo *et al.* 2010b). Species in the genus are characterized by having relatively narrow, subirregular lobes with rounded or subrounded eciliate margins, a pored epicortex, the presence of isolichenan in the cell walls, bifusiform conidia and simple rhizines (Elix 1993; Crespo *et al.* 2010b). *Canoparmelia* is widely distributed throughout the tropical and subtropical regions of the Old and New Worlds. In its original circumscription (Elix *et al.* 1986), *Canoparmelia* was found to be highly polyphyletic with species transferred to other genera, including *Austroparmelina* A. Crespo *et al.* (Crespo *et al.* 2010a), *Parmotrema* A. Massal. and *Crespoa* (D. Hawksw.) Lendemer & B. P. Hodk. (Crespo *et al.* 2010b; Hawksworth 2011; Lendemer & Hodkinson 2012; Kirika *et al.* 2016a; Divakar *et al.* 2017). Kirika *et al.* (2016a) identified a core group of *Canoparmelia*, which formed a sister relationship to the rest of the genera included in the parmotremond clade. *Canoparmelia* s. str. is sister to the *Xanthoparmelia* clade and diverged *c.* 48 million years ago (Divakar *et al.* 2015, 2019). *Canoparmelia texana* (Tuck.) Elix & Hale is the type species of the genus and is common throughout the tropics extending into the temperate zone, and is common in Kenya, where many samples for this study originated. It is characterized by having a sorediate upper surface, eciliate lobe margins and containing divaricatic and nordivaricatic acids. Morphological variations in lobe configuration, thallus size and fertility have been noted in a previous study (Divakar & Upreti

Author for correspondence: Pradeep K. Divakar. E-mail: pdivakar@farm.ucm.es

Cite this article: Kirika PM, Lumbsch HT, Huéscar EG, Quedensley TS and Divakar PK (2022) *Canoparmelia texana* (Parmeliaceae, Ascomycota) consists of two independent lineages. *Lichenologist* 54, 245–251. <https://doi.org/10.1017/S0024282922000135>

2005). Given the wide distribution of this taxon, the high level phenotypic variation across its range and previous studies in other clades where cryptic lineages were found, we sampled material of *C. texana* in order to examine the species delimitation of this widespread tropical to warm-temperate species using a three-locus data set.

Materials and Methods

Taxon sampling

The analyzed data matrices included 30 samples comprising six species of *Canoparmelia* and four outgroup taxa, focusing on recently collected samples from East Africa. A DNA data matrix of nuLSU, ITS and mtSSU rDNA sequences was used to infer evolutionary relationships. Thirty sequences were newly generated for this study. Five samples were used as outgroup taxa, including two samples of *Nesolechia oxyspora* (Tul.) A. Massal. and three of *Xanthoparmelia* (Vain.) Hale (*X. chlorochroa* (Tuck.) Hale, *X. exornata* (Zahlbr.) Brusse & M. D. E. Knox and *X. saxeti* (Stizenb.) G. Amo *et al.*). Information on studied materials, including GenBank Accession numbers, is provided in Table 1.

DNA extraction and PCR amplification

Total genomic DNA was extracted from small pieces of thallus devoid of any visible damage or contamination using the USB PrepEase Genomic DNA Isolation Kit (USB, Cleveland, OH, USA). We generated sequence data from three nuclear ribosomal markers: the ITS region, a fragment of nuLSU, and a fragment of the mtSSU. Polymerase chain reaction (PCR) amplifications were performed using Ready-To-Go PCR Beads (GE Healthcare, Pittsburgh, PA, USA) using dilutions of total DNA. Fungal ITS rDNA was amplified using primers ITS1F (Gardes & Bruns 1993), ITS4 and ITS4A (White *et al.* 1990; Larena *et al.* 1999), nuLSU rDNA was amplified using LR0R and LR5 (Vilgalys & Hester 1990), and mtSSU rDNA was amplified using the primers mrSSU1, mrSSU3R and mrSSU2R (Zoller *et al.* 1999). The primer combination ITS1F and ITS4A was used when the universal primer ITS4 failed to amplify the ITS region. Polymerase chain reaction products were visualized on 1% agarose gel and cleaned using ExoSAP-IT (USB, Cleveland, OH, USA). Cycle sequencing of complementary strands was performed using BigDye v. 3.1 (Applied Biosystems, Foster City, CA, USA) and the same primers as used for PCR amplifications. Sequenced PCR products were run on an ABI 3730 automated sequencer (Applied Biosystems) at the Pritzker Laboratory for Molecular Systematics and Evolution at the Field Museum, Chicago, and at the Unidad de Genómica (Parque Científico de Madrid).

Sequence editing and alignment

New sequences were assembled and edited using Geneious v. 8.1.9 (Kearse *et al.* 2012). Multiple sequence alignments for each locus were performed using the program MAFFT v. 7 (Katoh & Standley 2013). For the ITS and nuLSU sequences, we used the G-INS-i alignment algorithm and '20PAM/K = 2' scoring matrix, with an offset value of 0.3 and the remaining parameters set to default values. We used the E-INS-i alignment algorithm and '20PAM/K = 2' scoring matrix, with the remaining parameters set to default values, for the mtSSU sequences. The program Gblocks v. 0.91b (Talavera & Castresana 2007) was used to

delimit and remove ambiguous nucleotide positions from the final alignments using the online web server (http://molevol.cmima.csic.es/castresana/Gblocks_server.html), implementing the options for a less stringent selection of ambiguous nucleotide positions, including the 'Allow smaller final blocks', 'Allow gap positions within the final blocks', and 'Allow less strict flanking positions' options.

Phylogenetic analyses

Phylogenetic relationships were inferred using maximum likelihood (ML) and Bayesian inference (BI). Exploratory phylogenetic analyses of individual gene topologies showed no evidence of well-supported ($\geq 70\%$ bootstrap values) topological conflict, so relationships were estimated from a concatenated, three-locus (ITS, nuLSU and mtSSU) data matrix using a total-evidence approach (Wiens 1998). RAxML v. 8.1.11 (Stamatakis 2014) was implemented to reconstruct the concatenated ML gene tree using the CIPRES Science Gateway server (<http://www.phylo.org/portal2/>) and the 'GTRGAMMA' model was used, with locus-specific model partitions treating all loci as separate partitions, and evaluated nodal support using 1000 bootstrap pseudoreplicates. Exploratory analyses using alternative partitioning schemes resulted in identical topologies and similar bootstrap support values. We also reconstructed phylogenetic relationships from the concatenated multilocus data matrix under BI using the program BEAST v. 1.8.2 (Drummond & Rambaut 2007). We ran two independent Markov chain Monte Carlo (MCMC) chains for 20 million generations, implementing a relaxed lognormal clock, with a birth-death speciation process prior. The most appropriate model of DNA sequence evolution was selected for each marker using PartitionFinder v. 1.1.1 (Lanfear *et al.* 2012), treating the ITS1, 5.8S, ITS2, nuLSU and mtSSU as separate partitions. The first two million generations were discarded as burn-in. Chain mixing and convergence were evaluated using the effective sample size (ESS) values > 200 as a good indicator. Posterior trees from the two independent runs were combined using LogCombiner v. 1.8.0 (Drummond *et al.* 2012), and the final maximum clade credibility (MCC) tree was estimated from the combined posterior distribution of trees.

Morphological and chemical studies

Morphological and anatomical characters were studied using a Leica Wild M8 dissecting and Leica Leitz DM RB compound microscope. Chemical constituents were identified by high performance thin-layer chromatography (HPTLC) using standard methods (Arup *et al.* 1993) with a Camag horizontal developing chamber (Oleico Laboratory, Stockholm) using solvent system C.

Results and Discussion

A total of 30 sequences, including 13 nuclear ITS, 9 nuLSU and 8 mitochondrial SSU rDNA from 14 samples of *Canoparmelia*, were generated in this study and uploaded to GenBank (Table 1). The aligned data matrix contained 444 unambiguously aligned nucleotide position characters in ITS, 741 in nuLSU and 752 in mtSSU. The final alignment of the three-locus concatenated data set was 1937 positions in length, with 383 variable characters. TNe + G4, TNe + I and HKY + F + G4 were selected as the best fit models of evolution for the ITS, nuLSU and mtSSU data sets, respectively.

Table 1. Specimens of *Canoparmelia*, and other *Parmeliaceae* species used in this study, with voucher information and GenBank Accession numbers. Newly obtained sequences for this study are in bold and missing data are indicated with a dash (—).

Taxon label	Locality	Collector(s)	Voucher	GenBank Accession numbers		
				ITS	mtSSU	nuLSU
<i>Canoparmelia austroamericana</i> _2301Argentina	Argentina	Michlig & Niveiro	Michlig 2301	KY929408	—	—
<i>C. austroamericana</i> _2309Argentina	Argentina	Michlig & Niveiro	Michlig 2309	KY929407	—	—
<i>C. caroliniana</i> _1000NCU_USA	USA		NCU 1000A	GU994542	—	GU994584
<i>C. caroliniana</i> _4759Kenya	Kenya: Mt Kenya, Naro Moru	Kirika 4759	EA, F, MAF	OK561334	OK582188	—
<i>C. caroliniana</i> _AFTOL6_USA	USA			DQ782833	—	AY584634
<i>C. ecarperata</i> _9293Kenya	Kenya: Makueni	P. Kirika, I. Malombe & K. Matheka 3692	EA, F	KX369246		KX369264
<i>C. ecarperata</i> _9617Kenya	Kenya: Mt Kenya, Naro Moru	Kirika 4363A	EA, F, MAF	OK561335	—	—
<i>C. eruptens</i> _9388Kenya	Kenya: Ngangao Forest	P. Kirika, G. Mugambi & H. T. Lumbsch 2405	EA, F	KX369247	—	—
<i>C. eruptens</i> _9630Kenya	Kenya: Ngangao Forest	P. Kirika 4483	EA, F	KX369248	KX369257	KX369265
<i>C. nairobiensis</i> _9682Kenya	Kenya: Mt Kenya	P. Kirika 4423	EA, F, MAF	KX369252	KX369259	KX369269
<i>C. nairobiensis</i> _15544Kenya	Kenya		MAF- Lich 15544	GU994545	—	GU994587
<i>C. texana</i> _2747Argentina	Argentina	Michlig et al.	Michlig 2747	KY929413	—	—
<i>C. texana</i> _2817Kenya	Kenya: Eldama Ravine, Lembus Forest	Kirika, Mugambi & Lumbsch 2817	EA, F	OK561337	OK582190	—
<i>C. texana</i> _29616USA_Tennessee	USA: Tennessee	Lendemmer 29616	NY	KP659643	—	—
<i>C. texana</i> _tq22493USA_Texas	USA: Texas, Palo Pinto Co.	Taylor Quedensley 22493	F	OK561346	OK582195	OK561870
<i>C. texana</i> _4391Kenya	Kenya: Mt Kenya, Naro Moru	Kirika 4391	EA, F, MAF	OK561338	—	OK561863
<i>C. texana</i> _4617Kenya	Kenya: Chyulu Hills National Reserve	Kirika 4617	EA, F, MAF	OK561339	—	—
<i>C. texana</i> _4649Kenya	Kenya: Chyulu Hills National Reserve	Kirika 4649	EA, F, MAF	OK561340	—	OK561864
<i>C. texana</i> _5400Kenya	Kenya: Ololua Forest	Kirika 5400	EA, F	OK561342	OK582192	OK561866
<i>C. texana</i> _5335Kenya	Kenya: Ololua Forest	Kirika 5335	EA, F	OK561341	OK582191	OK561865
<i>C. texana</i> _6545Kenya	Kenya: Kakamega Forest	Kirika 5232	EA, MAF	OK561343	OK582193	OK561867
<i>C. texana</i> _6912Kenya	Kenya: Namanga Hills	Kirika 5465	EA, MAF	OK561336	OK582189	OK561862
<i>C. texana</i> _6913Kenya	Kenya: Namanga Hills	Kirika 5466	EA, MAF	OK561344	—	OK561868
<i>C. texana</i> _6916Kenya	Kenya: Namanga Hills	Kirika 5492	EA, MAF	OK561345	—	OK561869
<i>C. texana</i> _9288Kenya	Kenya: Kakamega Forest	Kirika 3424	EA, F	KX369253	OK582194	KX369271
<i>Nesolechia oxyspora</i>	Norway: Troms	Fröberg 10/08/2003	UPS	DQ980020	DQ923642	DQ923669

(Continued)

Table 1. (Continued)

Taxon label	Locality	Collector(s)	Voucher	GenBank Accession numbers		
				ITS	mtSSU	nuLSU
<i>N. oxyspora</i> _16480	Portugal: Azores	Ertz 16840	BR	KR995295	—	KR995417
<i>Xanthoparmelia chlorochroa</i> _536	USA: North Dakota	Leavitt 55437	BRY-C	HM578887	KR995372	HM579298
<i>X. exornata</i>	South Africa: Cape Province	Crespo et al. s. n.	MAF-Lich 14266	EF042908	EF025485	EF108318
<i>X. saxetii</i> _538	Uruguay: Florida	s. n.	BRY-C	HM578888	KR995373	HM579299

The single locus trees demonstrated no supported conflicts (results not shown) and therefore the concatenated three-locus data matrix (ITS, nuLSU and mtSSU) was analyzed. The partitioned ML analysis of the concatenated data matrix resulted in an optimal tree with ln likelihood value = -6485.867 (Fig. 1). Maximum likelihood and Bayesian topologies were largely similar and did not show any supported conflict (e.g. PP \geq 0.95 and ML bootstrap \geq 70%), and therefore the ML tree topology is depicted here with the Bayesian posterior probabilities added (Fig. 1). We consider PP \geq 0.95 and ML bootstrap \geq 70% as strong support for nodes.

Our samples of *Canoparmelia texana* do not form a monophyletic group, but cluster into two well-supported clades (clades 1 and 2 in Fig. 1). Clade 2 forms a sister-group relationship with the apotheciate *C. nairobiensis* (J. Steiner & Zahlbr.) Elix & Hale. However, this relationship lacks strong support. The African endemic *C. nairobiensis* has been hypothesized to be the esorediate progenitor of *C. texana* (Hale 1976). Clades 1 and 2 together with *C. nairobiensis* form a supported monophyletic group and this clade forms a strongly supported sister group with isidiolate *C. ecaperata* (Müll. Arg.) Elix & Hale and one sample of *C. caroliniana* (Nyl.) Elix & Hale from Kenya. The latter species is also polyphyletic with the other two samples of *C. caroliniana* from the USA, forming a well-supported sister group with *C. austroamericana* Adler. *Canoparmelia eruptens* (Kurok.) Elix & Hale is the earliest diverging clade within the strongly supported, monophyletic genus *Canoparmelia*, but this relationship is supported only in the ML analysis.

The present investigation supports a previous study (Kirika et al. 2016a) indicating that the species delimitation in *Canoparmelia* requires revision. We have re-examined the secondary chemistry and morphology of the samples of both major clades found in *C. texana*. The chemistry of all samples was similar, with atranorin, chloroatranorin and divaricatic acid present in all specimens, whereas the presence of nordivaricatic acid differed. Specimens in both major clades could have or lack the latter substance, which is closely related to divaricatic acid, and its absence from TLC plates might also be due to a lack of sensitivity of the analytical methods.

A re-examination of phenotypic features, including substratum specificity of samples from both *Canoparmelia texana* clades, revealed subtle morphological differences. The samples of clade 1 had a smaller ascospore size (7.5–10 μ m long), which fits well within the ascospore range of *C. texana* (9–11 μ m in length; Hale 1976), and conspicuous maculae on the upper thallus surface. Furthermore, as the sample from the type locality (Texas), belongs to clade 1 we here consider this clade to be *C. texana* s. str. The samples grouped in clade 2 had a relatively larger ascospore size

(11–14.5 μ m long) and inconspicuous maculae on the upper thallus surface. However, as we have examined only a small number of samples, a larger sampling effort will be needed to evaluate whether or not these phenotypic differences are consistent between the two clades. All other characters showed no significant differences.

Subsequently, we investigated available names that are currently considered synonyms of *Canoparmelia texana*. In most cases the ascospore size of the types suggested that these names are indeed synonyms of *C. texana*, with the exception of *Parmelia albaniensis* C. W. Dodge which has ascospores 11–13.0 μ m in length. Therefore, we propose to use this name to accommodate specimens of clade 2, and the name is transferred to the genus *Canoparmelia* below.

Taxonomic Treatment

Canoparmelia albaniensis (C. W. Dodge) Divakar & Kirika comb. nov.

Mycobank No.: MB 841885

Parmelia albaniensis C. W. Dodge, *Ann. Miss. Bot. Gard.* **46**, 121 (1959); type: South Africa, Cape of Good Hope, forests of Albany, Zeyher 3 (FH (Taylor Herbarium)—holotype!).

Thallus foliose, adnate, ash grey or grey-green, lobe margin often tinged with brown. *Lobes* 3–7 mm wide, crenate or deeply incised, eciliate, sometimes imbricate or lobulate, margins usually turned down. Upper cortex pitted, maculate, and rugose. *Medulla* white. Lower cortex black, with narrow, brown, naked marginal zone, rhizines simple, black, often tipped with brown or white. *Soralia* laminal, punctiform or originating from low pustules, coalescing in older parts of the thallus.

Apothecia rare, laminal, thalline margin sorediate; *asci* 8-spored; *ascospores* 11.0–14.5 \times 6.0–7.5 μ m, rarely biguttulate.

Conidia weakly bifusiform, 6–8 μ m long.

Secondary chemistry. Divaricatic acid, nordivaricatic acid (medulla C+ pale rose, KC+ purple), atranorin and chloroatranorin.

Ecology and distribution. Corticolous, rarely saxicolous, common in urban habitats and well-lit sites in dry, lowland forested areas to lower montane forests (1100–2600 m). Currently known from Argentina, China, Kenya and south-eastern United States (see clade 2 of Supplementary Material Fig. S1, available online), but it is probably overlooked and has been confused with *C. texana* s. str.

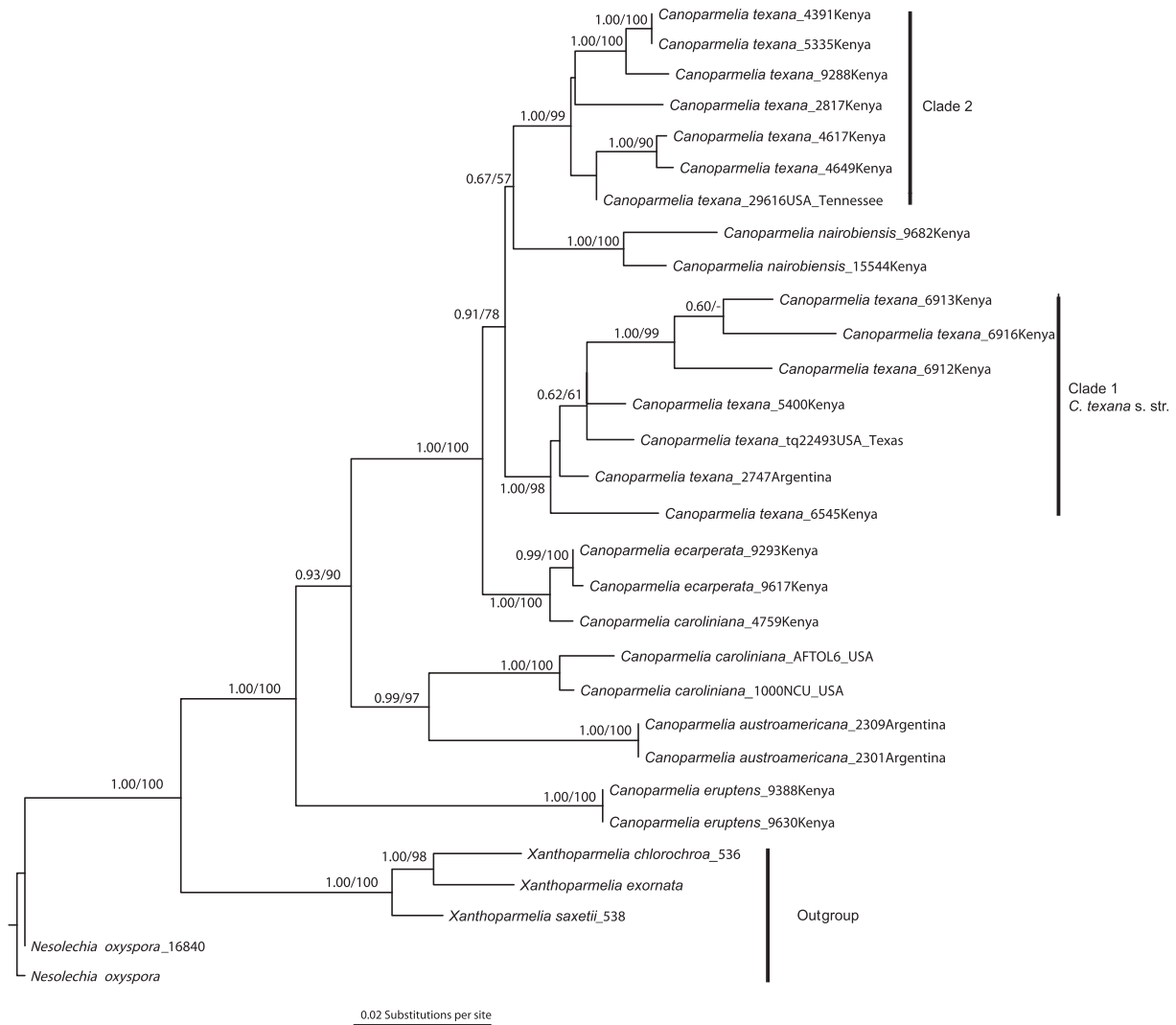


Fig. 1. Phylogenetic relationships of *Canoparmelia* species based on maximum likelihood (ML) and Bayesian analyses of a concatenated, three-locus data set (ITS, nuLSU and mtSSU rDNA). The ML tree is shown here. Posterior probabilities ≥ 0.95 from the Bayesian analysis and ML bootstrap values $\geq 70\%$ are given above branches. Information for the specimens used in this analysis are given in Table 1.



Fig. 2. *Canoparmelia albaniensis*, habit (P. Kirika 4649). In colour online


Notes. *Canoparmelia albaniensis* can easily be confused with *C. texana* in the field, but the former differs in having larger ascospores (11.0–14.5 μm long) and inconspicuous maculae on the upper surface. Furthermore, in molecular phylogenetic reconstruction *C. albaniensis* does not form a sister relationship with *C. texana* but with a non-soresiate African species, *C. nairobiensis* (Fig. 1). It is also morphologically similar to *C. aptata* (Kremp.) Elix & Hale, which differs in containing perlatolic acid.

Although Dodge (1959) reported the medulla C–, KC– on the type material of *Parmelia albaniensis* C. W. Dodge, in the re-examination we found it C+ rose, KC+ purple.

Additional specimens examined. Kenya: Kakamega Co.: Kakamega Forest, Isecheno Forest Station, tropical rainforest, 1760 m, 0°14'N, 34°52'E, on bark, 2013, P. Kirika 3424 (EA). Nyeri Co.: Mt Kenya, Naro Moru route, 4 km from Park gate towards Met. station, *Podocarpus*-bamboo forest, 2561 m, 0°10'S, 37°09'E, on bark, 2014, P. Kirika 4391 (EA). Kajiado Co.: Karen, Ololua Forest, disturbed dry upland forest with *Olea*,

Croton, *Calodendrum*, *Schrebera*, 1800 m, 1°21'S, 36°41'E, on bark, 2018, P. Kirika 5335 (EA). Baringo Co.: Rift Valley, Eldama Ravine, Lembus Forest, off Eldama Ravine-Eldoret Road, remnant montane forest, 2137 m, 0°16'N, 35°75'E, on bark, 2013, P. Kirika, G. Mugambi & H. T. Lumbsch 2817 (EA, F). Makueni Co.: Utu, Chyulu Hills National Reserve, dry rocky woodland, 1150 m, 2°40'S, 37°57'E, on bark, 2014, P. Kirika 4617 (EA); Chyulu Hills National Reserve, Chyulu-2 near ranger's post, woodland with *Erythrina abyssinica* and *Olea europaea*, 1430 m, 2°44'S, 37°56'E, on bark, 2014, P. Kirika 4649 (EA).

Acknowledgements. Extracted DNA sequences were generated in the Pritzker Laboratory for Molecular Systematics and Evolution at the Field Museum and at the Molecular Laboratory, Department of Pharmacology, Pharmacognosy and Botany, Faculty of Pharmacy, Complutense University of Madrid. We thank Isabel DiStefano (Chicago) for laboratory work in Chicago and Todd Widhelm (Chicago) for support with obtaining fresh material from Texas. We thank Steven Leavitt for generating sequences of *C. texana* from the type locality. We are grateful to Genevieve Tocci (Cambridge, Massachusetts) for sending us the type of *Parmelia albanienensis* on loan for examination. Jason Singhurst and Colton Nolen (Texas Parks and Wildlife Division) provided access and permission to collect specimens at Fawcett Wildlife Management Area in Palo Pinto County, Texas. This study was supported by grants from the IDP/Africa Training Fund and the Bill Stanley Memorial Fund at the Field Museum, the Spanish Ministerio de Ciencia e Innovación (PID2019-105312GB-I00), and the Santander-Universidad Complutense de Madrid (PR87/19-22637 and G/6400100/3000). The herbarium MAF–Lich is sincerely thanked for providing herbarium numbers and samples for this study.

Author ORCIDs.  Pradeep K. Divakar, 0000-0002-0300-0124; H. Thorsten Lumbsch, 0000-0003-1512-835X.

Supplementary Material. To view Supplementary Material for this article, please visit <https://doi.org/10.1017/S0024282922000135>.

References

- Arup U, Ekman S, Lindblom L and Mattson J-E (1993) High performance thin layer chromatography (HPTLC), an improved technique for screening lichen substances. *Lichenologist* **25**, 61–71.
- Crespo A and Lumbsch HT (2010) Cryptic species in lichen-forming fungi. *IMA Fungus* **1**, 167–170.
- Crespo A, Ferencova Z, Pérez-Ortega S, Argüello A, Elix JA and Divakar PK (2010a) *Austroparmelia*, a new Australasian lineage in parmelioid lichens (*Parmeliaceae*, *Ascomycota*): a multigene and morphological approach. *Systematics and Biodiversity* **8**, 209–221.
- Crespo A, Kauff F, Divakar PK, Del-Prado R, Pérez-Ortega S, Amo de Paz G, Ferencova Z, Blanco O, Roca-Valiente B, Núñez-Zapata J, et al. (2010b) Phylogenetic generic classification of parmelioid lichens (*Parmeliaceae*, *Ascomycota*) based on molecular, morphological and chemical evidence. *Taxon* **59**, 1735–1753.
- Divakar PK and Upreti DK (2005) *Parmelioid Lichens in India (A Revisionary Study)*. Dehra Dun: Bishen Singh Mahendra Pal Singh.
- Divakar PK, Crespo A, Wedin M, Leavitt SD, Hawksworth DL, Myllys L, McCune B, Randlane T, Bjerke JW, Ohmura Y, et al. (2015) Evolution of complex symbiotic relationships in a morphologically derived family of lichen-forming fungi. *New Phytologist* **208**, 1217–1226.
- Divakar PK, Crespo A, Kraichak E, Leavitt SD, Singh G, Schmitt I and Lumbsch HT (2017) Using a temporal phylogenetic method to harmonize family- and genus-level classification in the largest clade of lichen-forming fungi. *Fungal Diversity* **84**, 101–117.
- Divakar PK, Wei XL, McCune B, Cubas P, Boluda CG, Leavitt SD, Crespo A, Tchabanenko S and Lumbsch HT (2019) Parallel Miocene dispersal events explain the cosmopolitan distribution of the Hypogymnioid lichens. *Journal of Biogeography* **46**, 945–955.
- Dodge CW (1959) Some lichens of tropical Africa, III: *Parmeliaceae*. *Annals of the Missouri Botanical Garden* **46**, 39–193.
- Drummond DJ and Rambaut A (2007) BEAST: Bayesian evolutionary analysis by sampling trees. *BMC Evolutionary Biology* **7**, 214.
- Drummond AJ, Suchard MA, Xie D and Rambaut A (2012) Bayesian phylogenetics with BEAUti and the BEAST 1.7. *Molecular Biology and Evolution* **29**, 1969–1973.
- Elix JA (1993) Progress in the generic delimitation of *Parmelia* sensu lato lichens (*Ascomycotina: Parmeliaceae*) and a synoptic key to the *Parmeliaceae*. *Bryologist* **96**, 359–383.
- Elix JA, Johnston J and Verdon D (1986) *Canoparmelia*, *Paraparmelia* and *Relicinopsis*, three new genera in the *Parmeliaceae* (lichenized *Ascomycotina*). *Mycotaxon* **27**, 271–282.
- Gardes M and Bruns TD (1993) ITS primers with enhanced specificity for basidiomycetes – application to the identification of mycorrhizae and rusts. *Molecular Ecology* **2**, 113–118.
- Hale ME, Jr (1976) A monograph of the lichen genus *Pseudoparmelia* Lynge (*Parmeliaceae*). *Smithsonian Contributions to Botany* **31**, 1–62.
- Hawksworth DL (2011) *Parmotrema* subgen. *Crespoa* subgen. nov. for the *Canoparmelia crozalsiana* clade. *Lichenologist* **43**, 647–648.
- Hawksworth DL (2012) Global species numbers of fungi: are tropical studies and molecular approaches contributing to a more robust estimate? *Biodiversity and Conservation* **21**, 2425–2433.
- Hawksworth DL and Lücking R (2017) Fungal diversity revisited: 2.2 to 3.8 million species. *Microbiology Spectrum* **5**(4), FUNK-0052-2016.
- Katoh K and Standley DM (2013) MAFFT multiple sequence alignment software version 7: improvements in performance and usability. *Molecular Biology and Evolution* **30**, 772–780.
- Kearse M, Moir R, Wilson A, Stones-Havas S, Cheung M, Sturrock S, Buxton S, Cooper A, Markowitz S, Duran C, et al. (2012) Geneious Basic: an integrated and extendable desktop software platform for the organization and analysis of sequence data. *Bioinformatics* **28**, 1647–1649.
- Kirika P, Divakar PK, Crespo A, Mugambi GK, Orock EA, Leavitt SD, Gatheri GW and Lumbsch HT (2016a) Phylogenetic studies uncover a predominantly African lineage in a widely distributed lichen-forming fungal species. *Mycologia* **14**, 1–16.
- Kirika PM, Divakar PK, Crespo A, Gatheri GW, Mugambi G, Leavitt SD, Moncada B and Lumbsch HT (2016b) Molecular data show that *Hypotrachyna sorocheila* (*Parmeliaceae*) is not monophyletic. *Bryologist* **119**, 172–180.
- Kirika PM, Divakar PK, Buaruang K, Leavitt SD, Crespo A, Gatheri GW, Mugambi G, Benatti MN and Lumbsch HT (2017) Molecular phylogenetic studies unmask overlooked diversity in the tropical lichenized fungal genus *Bulbothrix* s.l. (*Parmeliaceae*, *Ascomycota*). *Botanical Journal of the Linnean Society* **184**, 387–399.
- Kirika PM, Divakar PK, Crespo A and Lumbsch HT (2019) Molecular and phenotypical studies on species diversity of *Hypotrachyna* (*Parmeliaceae*, *Ascomycota*) in Kenya, East Africa. *Bryologist* **122**, 140–150.
- Kraichak E, Huang JP, Nelsen M, Leavitt SD and Lumbsch HT (2018) A revised classification of orders and families in the two major subclasses of *Lecanoromycetes* (*Ascomycota*) based on a temporal approach. *Botanical Journal of the Linnean Society* **188**, 233–249.
- Lanfear R, Calcott B, Ho SY and Guindon S (2012) PartitionFinder: combined selection of partitioning schemes and substitution models for phylogenetic analyses. *Molecular Biology and Evolution* **29**, 1695–1701.
- Larena I, Salazar O, González V, Julián MC and Rubio V (1999) Design of a primer for ribosomal DNA internal transcribed spacer with enhanced specificity for ascomycetes. *Journal of Biotechnology* **75**, 187–194.
- Leavitt SD, Moreau CS and Lumbsch HT (2015) The dynamic discipline of species delimitation: progress toward effectively recognizing species boundaries in natural populations. In Upreti DK, Divakar PK, Shukla V and Bajpai R (eds), *Recent Advances in Lichenology*. New Delhi: Springer India, pp. 11–44.
- Lendemer JC and Hodkinson BP (2012) Recognition of the *Parmelia crozalsiana* group as the genus *Crespoa*. *North American Fungi* **7**, 1–5.

- Lumbsch HT and Leavitt SD** (2011) Goodbye morphology? A paradigm shift in the delimitation of species in lichenized fungi. *Fungal Diversity* **50**, 59–72.
- Moncada B, Lücking R and Coca LF** (2013) Six new apotheciate species of *Sticta* (lichenized *Ascomycota*: *Lobariaceae*) from the Colombian Andes. *Lichenologist* **45**, 635–656.
- Parnmen S, Rangsiruji A, Mongkolsuk P, Boonpragob K, Nutakki A and Lumbsch HT** (2012) Using phylogenetic and coalescent methods to understand the species diversity in the *Cladia aggregata* complex (*Ascomycota*, *Lecanorales*). *PLoS ONE* **7**, e52245.
- Singh G, Aptroot A, Rico V, Otte J, Divakar PK, Crespo A, Caceres MES, Lumbsch HT and Schmitt I** (2018) *Neoprotoparmelia* gen. nov. and *Maronina* (*Lecanorales*, *Protoparmelioideae*): species description and generic delimitation using DNA barcodes and phenotypical characters. *MycKeys* **44**, 19–50.
- Stamatakis A** (2014) RAxML version 8: a tool for phylogenetic analysis and post-analysis of large phylogenies. *Bioinformatics* **30**, 1312–1313.
- Talavera G and Castresana J** (2007) Improvement of phylogenies after removing divergent and ambiguously aligned blocks from protein sequence alignments. *Systematic Biology* **56**, 564–577.
- Vilgalys R and Hester M** (1990) Rapid genetic identification and mapping of enzymatically amplified ribosomal DNA from several *Cryptococcus* species. *Journal of Bacteriology* **172**, 4238–4246.
- White TJ, Bruns TD, Lee SB and Taylor JW** (1990) Amplification and direct sequencing of fungal ribosomal RNA genes for phylogenetics. In Innis MA, Gelfand DH, Sninsky JJ and White TJ (eds), *PCR Protocols: a Guide to Methods and Applications*. San Diego: Academic Press, pp. 315–322.
- Wiens JJ** (1998) Combining data sets with different phylogenetic histories. *Systematic Biology* **47**, 568–581.
- Zoller S, Scheidegger C and Sperisen C** (1999) PCR primers for the amplification of mitochondrial small subunit ribosomal DNA of lichen-forming ascomycetes. *Lichenologist* **31**, 511–516.