

TORREYA

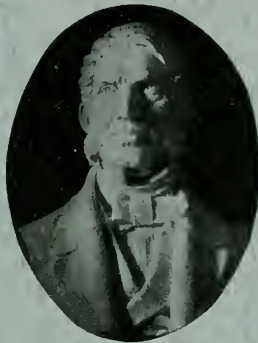
A BI-MONTHLY JOURNAL OF BOTANICAL NOTES AND NEWS

EDITED FOR

THE TORREY BOTANICAL CLUB

BY

GEORGE T. HASTINGS



John Torrey, 1796-1873

CONTENTS

Climbing a Mogote, M. A. CHRYSLER.....	25
Unreported Plants from Long Island, Part 2, N. M. GRIER.....	29
The Lilies of the Field, EPHRAIM HA RUBENI.....	35
A New Varnish-leaf Tree from Florida, JOHN K. SMALL.....	38
Illustrative Material of Gaps and Traces, C. L. WILSON.....	39
Proceedings of the Club.....	41
News Notes.....	43

PUBLISHED FOR THE CLUB
AT 8 WEST KING STREET, LANCASTER, PA.
BY THE INTELLIGENCER PRINTING COMPANY

Entered at the Post Office at Lancaster, Pa., as second-class matter

ities of the soil do not have something to do with the individuality of the flora. As I told my conductor, I was already familiar with a peat bog, a sand dune, a salt marsh; I have now added to the list another ecological community—the mogote. So let us prepare to jump into our fotingo and be rushed back to the *Poincianas* and *Crotons* of Pinar del Rio.

RUTGERS UNIVERSITY,
NEW BRUNSWICK, N. J.

UNREPORTED PLANTS FROM LONG ISLAND, N. Y.

II CRYPTOGAMS—PART 2.*

N. M. GRIER

EUMYCETES†

PHYCOMYCETES

ALBUGINACEAE

Albugo portulacae (DC) O. Kuntze. On *Brassica oleracea* in gardens.
C. S. H. A. F. B.

ANCYSTILACEAE

Ancylistes closteri Pfitzer. Parasitic on *Closterium*. sp. C. S. H. N. M. G.

MUCORACEAE

Phycomyces nitens (Agard.) Kunze. Growing on dung in woods. C. S. H.
A. F. B.

Thamnidium elegans. Link. On rat dung culture. C. S. H. M. A. B.

PERONOSPORORACEAE

Peronospora parasitica (Pers.) Fr. On *Lepidium virginicum*. C. S. H. A. F. B.

SYNCHITRIDACEAE

Synchytrium decipiens Farlow. Common on *Amphicarpa monoica*. C. S. H.
A. F. B.

ASCOMYCETES

ASCOBOLACEAE

Ascophanus carneus (Pers.) Boud. On dung. Lloyds Neck. N. M. G.

Ascobolus stercorarius (Bull.) Schr. On cow dung at first lake. A. F. B.

* Part I appeared in the January–February number of *Torreya*.

† Revised by Dr. A. H. Graves, Brooklyn Botanic Garden with regard to most convenient usage, following Saccardo's "Sylloge Fungorum" and Oudemann's "Enumeratio Systematica Fungorum," and Engler and Prantl.

GEOGLOSSACEAE

- Geoglossum americanum* (Cooke) Sacc. On moss. C. S. H. D. S. J.
Geoglossum glutinosum Pers. On moss near 3d lake. C. S. H. M. A. B.
Geoglossum ophioglossoides (L.) Sacc. Mossy banks. C. S. H. D. S. J.
Leotia viscosa (Fr.) Schr. Occasional in woods. C. S. H. D. S. J.

HELOTIACEAE

- Monilia cinerea* Bon. On plum trees. C. S. H. A. F. B.

HELVELLACEAE

- Helvella crispa* (Scop) Fries. Marsh near 2nd lake. C. S. H. A. F. B.
Helvella lacunosa Fr. On ground in woods. C. S. H. D. S. J.

HYPOCREACEAE

- Chromochrea gelatinosa* (Tode) Scaver. On rotten logs near 1st lake. C. S. H.
 A. F. B.
Hypomyces hyalinus (Schw.) Tul. Common in woods. C. S. H. A. F. B.
Hypomyces chrysospermus (Bull.) Tul. Common in woods. C. S. H. A. F. B.
Nectria peziza (Tode.) Fr. West of lakes on dead limbs. C. S. H. A. F. B.

PYRONEMATACEAE

- Pyronema confluens* Tul. 1st lake. C. S. H. A. F. B.

RHIZINIACEAE

- Psilopeziza Babingtonii* Berk. Rotten logs near 1st lake. C. S. H. D. S. J.

XYLARIACEAE

- Daldinia concentrica* De Not. On birch log in lake region. C. S. H. M. A. B.

BASIDIOMYCETES

AGARICACEAE

- Agaricus diminutivus* PN. In woods near De Forest Estate. C. S. H. M. A. B.
Amanita phalloides var. *viridis* Pers. Huntington Road. C. S. H. M. A. B.
Amanita strobiliformis Fr. C. S. H. M. A. B.
 The three varieties sometimes listed as *alba*, *fulva*, and *livida* are also reported.
Amanitopsis volvata PK. On ground between 1st and 2nd lakes. C. S. H.
 G. C. F.
Boletinus campeis. (Opat.) Kalckb. On ground near 2nd lake. C. S. H. D. S. J.
Boletinus porosus (Berk.) PK. On moss, on ground old railway survey west
 side 2nd lake. C. S. H. D. S. J.
Boletinus porcus var. *opacus* PK. On ground west of lower lake. C. S. H.
 D. S. J.
Clitocybe candida Bres. On ground. C. S. H. M. A. B.
Clitocybe gigantea (Qué.) Cham. Sandy soil. C. S. H. M. A. B.

- Clitocybe infundibuliformis* Bull. Ground in woods C. S. H. M. A. B.
Clitocybe media PK. Vicinity of lakes. C. S. H. M. A. B.
Collybia butyracea (Bull.) Quéf. On decayed leaves, lake region. C. S. H. G. C. F.
Cortinarius sp. On dead and decaying leaves west of 1st and 2nd lakes. C. S. H. G. C. F.
Hygrophorus cantharellus. Schw. Fresh water marsh near fish hatchery. C. S. H. M. A. B.
Hygrophorus conicus (Scop) Fr. On ground, woods. C. S. H. M. A. B.
Hygrophorus fuliginosus Frost. C. S. H. M. A. B.
Inocybe cinnamata (Fr.) Gillet. On ground beneath pine trees. C. S. H. M. A. B.
Lactaria lignyotus. Fr. Near research laboratory in sandy soil. C. S. H. M. A. B.
Lepiota naucina. Fr. Sandy soil. C. S. H. G. C. F.
Marasmius nigripes Schw. On oak leaves at De Forest Estate. C. S. H. M. A. B.
Marasmius sarmentosus Berk. On fallen oak leaves and twigs. Huntington Road. C. S. H. M. A. B.
Omphalia caespitosa Bot. Old tree stumps near DeForest Estate. C. S. H. M. A. B.
Panaeolus campanulatus L. On horse dung west of 2nd lake. C. S. H. G. C. F.
Panus albido-tomentosus. Cke. On moss twigs. C. S. H. M. A. B.
Panus torulosus var. *conchatus* Fr. DeForest Estate. C. S. H. M. A. B.
Russula crustosa. PK. Roadsides, DeForest Estate. C. S. H. M. A. B.
Russula cyanoxantha. Schaeff. Ground, woods near lakes. C. S. H. M. A. B.
Russula roseipes (Secr.) Bres. Back of DeForest Estate. C. S. H. M. A. B.
Hyponeuris alneus (L.) Earle. On black cherry bark. C. S. H. M. A. B.

AURICULARIACEAE

- Calocera cornea* (Batsch) Fries. C. S. H. A. F. B.
Dacromyces chrysoceumus (Bull.) Tul. Rotten branches on ground near school house. G. C. F.

CALOSTOMATACEAE

- Calostoma cinnabarinum* Corda. Woods, west of lakes. C. S. H. A. F. B.

CLAVARIACEAE

- Clavaria circinans*. PK. Woods near lakes. C. S. H. M. A. B.
Clavaria coronata. Schw. On birch woods near lakes. C. S. H. M. A. B.
Clavaria fusiformis Sow. Between 2nd and 3rd lakes C. S. H. G. C. F.
Clavaria pistillaris L. Ground between 1st and 2nd lakes. C. S. H. G. C. F.
Clavaria stricta, var *fumida* Pers. On ground. C. S. H. M. A. B.
Lachnocladium Michineri B. and C. On wet ground, Center Island. M. A. B.
Sparassis tremelloides Berk. Oak stump on hill near laboratory. C. S. H. G. C. F.

CORTICIACEAE

- Corticium comedens* (Nees) Fr. On cherry birch. C. S. H. M. A. B.
Stereum compactum Pers. Road to Huntington. C. S. H. M. A. B.
Sterigmatocystis sp. On horse chestnut bur. C. S. H. M. A. B.

EXOBASIDIACEAE

- Hirneola auricola-Judae* (L.) Berk. C. S. H. M. A. B.

HYDNACEAE

- Hydnum repandum* L. C. S. H. A. F. B.
Irpex deformis. Fr. Woods near lakes. C. S. H. M. A. B.
Irpex fusco-violaceus (Schr.) Fr. Near lakes, on birch bark. C. S. H.
 M. A. B.

LYCOPERDACEAE

- Bovistella chiensis* E. and M. Goat pasture. C. S. H. G. C. F.

PHALLACEAE

- Mutinus caninus* (Huds.) Fr. Frequent on soil near laboratory, and in woods.
 C. S. H. D. S. J.
Mutinus elegans. Mont. Under old leaves in chestnut woods, Huntington
 Road. C. S. H. M. A. B.

POLYPORACEAE

- Boletus auripes* PN. Huntington Road. C. S. H. M. A. B.
Boletus bicolor PK. Ground. C. S. H. M. A. B.
Boletus griseus Frost. Ground, west of 2nd lake. C. S. H. M. A. B.
Boletus indecisus PK. Woods, west of 2nd lake. C. S. H. N. M. G.
Boletus crnatipes PK. Open woods, Huntington Road. C. S. H. D. S. J.
Boletus Russelli Frost. Open woods, Huntington Road. C. S. H. D. S. J.
Daedalea confragosa (Bolt.) Pers. Old stump. Sagamore Hill. Oyster Bay.
 M. A. B.
Fistulina pallida B. and R. Frequent on chestnut. C. S. H. M. A. B.
Polyporus lucidus Fr. On stumps, Hempstead Plain, Hicksville. M. A. B.
Polyporus obliquus Pers. Old log to left of Sandpit. C. S. H. M. A. B.
Polyporus robiniophilus Fr. Old locust trees near village. C. S. H. M. A. B.
Polysuictus abietinus (Dick.) Fr. Old limb. C. S. H. M. A. B.
Polystictus cinnabarinus Klotz. On chestnut posts near rectory. C. S. H.
 D. S. J.
Polystictus connatus Schw. Woods, west of lakes. C. S. H. A. F. B.
Simblum sphaerocephalum Schlacht. Near Jones residence. C. S. H. N. M. G.

PUCCINIACEAE

- Uromyces fragarioides*. On *Duchesnea indica* near laboratory. C. S. H.
 M. A. B.
Uromyces stables B. and C. On *Statice limonium* at Lloyd's Neck, L. I.
 A. F. B.

SPHAEROBOLACEAE

Sphaerobolus carpobolus. L. Rotten logs near 1st lake. C. S. H. D. S. J.

THELOPHORACEAE

Craterellus sinuosus var. *crispus* Fr. On ground in woods at Tiffanys. M. A. B.

Michinera Artocreas B. and C. C. S. H. N. M. G.

Solenia villosa Hoffm. On decaying branches of *Rubus* near schoolhouse. C. S. H. M. A. B.

TILLETIACEAE

Entyloma rhodopalium (Fr.) Quél. DeForest Estate. C. S. H. M. A. B.

TREMELLACEAE

Tremella vesicaria Eng. Bot. On rotten branches and ground near schoolhouse. C. S. H. G. C. F.

FUNGI IMPERFECTI

MUCEDINACEAE

Botrytis cinerea Pers. On leaves of *Symplocarpus foetidus*. C. S. H. A. F. B.

Mycogone incarnata Pers. On decaying *Agaricus*. C. S. H. A. F. B.

Sepedonium chrysospermum (Bull.) Fr. Parasitic on *Boletus* near fish hatchery. C. S. H. A. F. B.

Conidial stage of *Hypomyces chrysospermus*.

Stachybotrys lobulata Cords. On goat dung. Lloyd's Neck. C. S. H. A. F. B.

SPHAERIOIDACEAE

Phyllosticta minima (B. and C.) E. and E. On *Acer rubrum*. DeForest Estate. C. S. H. N. M. G.

Phyllosticta Catalpae E. and M. On *Catalpa* sp. Havemeyers Estate. C. S. H. M. A. B.

Phyllosticta terminalis E. and M. On *Leucanthoe* sp. C. S. H. M. A. B.

Phyllosticta smilacis E. and E. On *Smilax glauca*. C. S. H. M. A. B.

Phyllosticta Halstedii E. and E. On *Syringa vulgaris*. C. S. H. M. A. B.

Our records confirm the presence on Long Island of the following species of Fungi listed by Burnham and Latham (1914-23) *Cystopus candidus*, *Taphrin alnitorgua*, *Chlorosplenium æruginosum*, *Sclerotinia fructigena*, *Lachnea scutellata*, *Rosellinia subulata*, *Amanita Frostii*, *Amanitopsis vaginata*, *Paneolus retirugis*, *Pleurotos sapidus*, *Russula emetica*, *Hydnum zonatum*, *Phaeodon imbricatum*, *Lycoperdon Cyathiforme*, *Dictyophora duplicata*, *Fomes applanatus*, *Polystictus cinnamomeus*, *Uromyces polygوني*, *Ulocalla foliacea*, *Polystictus hirsutus*, *Boletus auriporus*, *Polystictus versicolor*, *Omphalis campanella*.

LICHENES*

CLADONIACEAE

- Cladonia fimbriata* (L.) Fr. On ground. C. S. H. S. A. G.
Stereocaulon condensatum Hoffm. On ground. C. S. H. S. A. G.

HEPATICAET†

JUNGERMANNIACEAE

- Bazzania trilobata* (L.) S. F. Gray. At foot of tree, 2nd lake. C. S. H. D. S. J.

MUSCI‡

DICRANACEAE

- Dicranum longifolium* (Ehr.) Hedw. C. S. H. G. H. H.

LESKEACEAE

- Thelia asprella* (Schimp.) Sull. On tree. C. S. H. D. S. J.
Ptilium Crista-castrensis (L.) De Notaris. N. M. G.

BIBLIOGRAPHY

- 1884—Britton, N. L. List of Algae collected near Glen Cove, L. I. Ann. Rep. State Board Health, N. Y. IV, 379-384.
 1904—Britton, N. L., Murrill, W. A., Barnhart, J. H., and specialists. North American Flora. N. Y. Botanical Garden. Vol. 1-34. Published or in preparation.
 1914—Burnham, S. H. and Latham, R. A. The Flora of the Town of Southold, L. I. and Gardiners Island. Torrey 14.
 1917—Ibid. The Flora of the town of Southold, L. I. and Gardiners Island. First supplementary list. Torrey 17.
 1917—Ibid. Corrections of the Flora of Southold, L. I. and Gardiners Island. Torrey 17.
 1921—Ibid. The Flora of the town of Southold, L. I. and Gardiners Island. Second supplementary list, Torrey 21.
 1923—Ibid. The Flora of the town of Southold, L. I. and Gardiners Island. Third supplementary list. Torrey 23.
 1924—Ibid. The Flora of the town of Southold, L. I. and Gardiners Island. Fourth supplementary list. Torrey 24.
 1914—Cushman, J. A. "Desmids from Bronx Park, N. Y. Bull. Torrey Bot. Club, 30, 1914.

*Revised following the nomenclature of "British Lichens." A Lorraine Smith. British Museum of Natural History, 1912.

†Revised following the nomenclature of "Second Revised List of New England Hepaticae." A. W. Evans. *Rhodora* 25.

‡Revised by O. E. Jennings following nomenclature given in "Mosses of W. Pennsylvania." O. E. Jennings Carnegie Museum, Pittsburgh, Pa. (1913).

- 1898—Davenport, C. B. The Flora about Cold Spring Harbor. Science II-VIII, 607-688.
- 1923—Evans, A. W. Second Revised List of New England Hepatical Rhodora 25.
- 1882—Farlow, W. G. The Marine Algae of New England. Appendix A. Report U. S. Commissioner of Fish and Fisheries for 1879, p. 1-210. Washington.
- 1893—Ibid. Notes on the Algae of Long Island. Bull. Torrey Bot. Club. Vol. 20.
- 1902—Grout, A. J. Additions to the Recorded Flora of Long Island, Torrey 2.
- 1914—Howe, M. A. Some Mid-winter Algae of Long Island Sound. Torrey 14.
- 1893—Jelliffe, S. E. A preliminary list of the plants found in the Ridgewood water supply of the city of Brooklyn. King's County, N. Y. Bull. Torrey Bot. Club. 20.
- 1893—Jelliffe, S. E. Notes on the Flora of Long Island. Science 22.
- 1894—Jelliffe, S. E. Cryptogamic notes from Long Island. Bull. Torrey Bot. Club. 21, 22.
- 1899—Jelliffe, S. E. Flora of Long Island. Published by the author, N. Y. City.
- 1904—Jelliffe, S. E. Additions to the Recorded Flora of Long Island. Torrey 2.
- 1886—Pike, Nicholas. Check list of Marine Algae, based on specimens collected on the shores of Long Island, from 1839-1885. Bull. Torrey Bot. Club. 1886.
- 1905—Reichling, G. A. Contribution to Recorded Fungus and Slime Mold Flora of Long Island. Torrey 5.
- 1913—Sumner, F. B., Osburn, A. C., Cole, L. J., Davis, B. M. A Biological Survey of the waters of Woods Hole and vicinity. Bull. U. S. Bureau of Fisheries for 1911, Vol. 31, 2 parts, Washington.
- 1905—Wood, G. C. Additions to Lichen Flora of Long Island. Bryologist 8.
- 1914—Wood, G. C. A preliminary list of the Lichens found within a radius of 100 miles of N. Y. City. Torrey 4.
- DARTMOUTH COLLEGE, HANOVER, N. H.

THE LILIES OF THE FIELD

(Extract from the lecture by Dr. Ephraim Ha Reubeni on "New Light on the Flora of the Old and New Testaments," given before the Club December 9, 1924. Translated from the Hebrew by David de Sola Pool.)

It may be interesting to turn our attention for a moment to the most famous of the plants of the New Testament, the lilies of the field, *Krionon Agrion*, mentioned in Matthew VI, 28, and Luke XII, 27. In the parable, Jesus says that "Even Solomon in all his glory was not arrayed like one of these. But if God doth so clothe the grass in the field, which today is, and tomorrow is cast into the oven"