

TORREYA

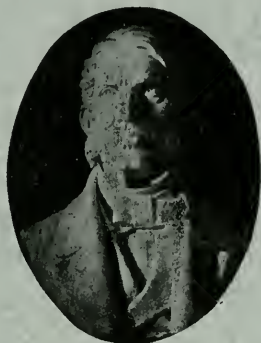
A BI-MONTHLY JOURNAL OF BOTANICAL NOTES AND NEWS

EDITED FOR

THE TORREY BOTANICAL CLUB

BY

GEORGE T. HASTINGS



John Torrey, 1796-1873

CONTENTS

Sketches of Travel in South America, WILLIAM A. MURRILL.....	69
The Flora of the Town of Southold, Fifth Supplementary List, STEWART H. BURNHAM AND ROY A. LATHAM.....	71
Book Review:	
Meisel's Bibliography of American Natural History, JOHN HENDLEY BARNHART.....	83
Trelease's Winter Botany, GEORGE T. HASTINGS.....	85
Proceedings of the Club.....	86
News Notes.....	87
Errata.....	88

PUBLISHED FOR THE CLUB

AT 8 WEST KING STREET, LANCASTER, PA.

BY THE INTELLIGENCER PRINTING COMPANY

Entered at the Post Office at Lancaster, Pa., as second-class matter

THE FLORA OF THE TOWN OF SOUTHOLD, LONG ISLAND AND GARDINER'S ISLAND, NEW YORK

STEWART H. BURNHAM AND ROY A. LATHAM

Fifth Supplementary List*

INSECT GALLS

- Cecidomyia majalis* O.S.—On leaves of *Quercus velutina* at Cutchogue; determined by Dr. Alfred C. Kinsey.
- C. pinirigidae* Pack—On needles of *Pinus rigida* at Peconic; determined by Mr. Charles T. Greene.
- Cincticornia serrata* Felt—On leaves of *Quercus velutina* at Cutchogue; determined by Dr. Kinsey.
- Neolasioptera perfoliata* Felt—On *Eupatorium perfoliatum*; determined at the Bureau of Entomology, Washington, D. C.
- Oedaspis atra* Loew.—On *Solidago* at Orient; determined at the Bureau of Entomology.
- Parallelodiplosis Spirae* Felt—On *Spiraea tomentosa* at Orient and Mattituck; determined at the Bureau of Entomology.
- Phyllocoptes toxicophagus* Ewing—On *Rhus Toxicodendron*, var. *radicans*; determined at the Bureau of Entomology.
- Rhodites globuloides* Beutm.—On *Rosa carolina* at Mattituck; determined by Dr. Kinsey.
- R. nebulosus* Bass.—On *Rosa blanda*; determined by Dr. Kinsey.
- R. radicum* O. S.—On *Rosa carolina*; determined by Dr. Kinsey.
- R. rosaefolii* Ckll.—On *Rosa blanda*; determined by Dr. Kinsey.

EUPHYCEAE

- Calothrix scopulorum* (Web. & Mohr) Ag.—Banks of a salt creek at Southold; determined by Dr. M. A. Howe.
- Cladophora Magdalenae* Harv.—Banks of a salt creek at Southold; determined by Dr. Howe.
- Draparnaldia acuta* (Ag.) Kütz.—In a pool at margin of woods at Mattituck in March; determined by Dr. T. E. Hazen.
- Microspora floccosa* (Vauch.) Thuret—In pools in woods at Southold; determined by Dr. Hazen.
- Phormidium fragile* (Menegh.) Gomont—Banks of a salt creek at Southold; determined by Dr. Howe.

* The Preliminary flora was published in *Torreyia* 14: 201-225, Nov. 1914 and 229-254, Dec. 1914. The First Supplementary list was published in *Torreyia* 17: 111-122, July 1917. The Second Supplementary list was published in *Torreyia* 21: 1-11, Jan.-Feb. 1921 and 28-33, March-April 1921. The Third Supplementary list was published in *Torreyia* 23: 3-9, Jan.-Feb. 1923 and 25-31, March-April 1923. The Fourth Supplementary list was published in *Torreyia* 24: 22-32, March-April 1924.

Rhizoclonium tortuosum Kütz.—Salt meadows at Southold; determined by Dr. Howe.

Vaucheria geminata (Vauch.) DC., var. *racemosa* (Vauch.) Walz—Swamps at Greenport; determined by Dr. Hazen.

SCHIZOMYCETES

Bacillus carotovorus Jones,

Bacterium maculicolum McCulloch and

Pseudomonas campestris (Pammel) E. F. Smith are common on cabbage, *Brassica oleracea*, var. *capitata*; brussels sprouts, *B. oleracea*, var. *gemmifera*; and cauliflower, *B. oleracea*, var. *botrytis*.

PHYCOMYCETES

Metarrhizium Anisopliae (Metsch.) Sorokin—Orient on potato beetles; determined by Dr. Roland Thaxter. This is *Isaria Anisophilae* (Metsch.) Pettit.

Peronospora parasitica (Pers.) DeBary—On cabbage, *Brassica oleracea*, var. *capitata*; brussels sprouts, *B. oleracea*, var. *gemmifera*; and cauliflower, *B. oleracea*, var. *botrytis*.

ASCOMYCETES (EXCLUDING PYRENOMYCETES)

Ascobolus Crouani Boud. (not Cooke)—Prof. John Dearness in Mycol. 16: 146. July 1924 says, "An *Ascobolus* was collected on stems of *Brassica oleracea gemmifera* by Roy Latham: 577, at Orient, N. Y., which is hardly separable from Boudier's *A. Crouani*. The sporidia, 15-19 × 10-11 μ, hyaline at first; become so dark-brown as to obscure the reticulations which are longitudinal and anastomosing, about 6 visible on each side. 'These Brussels sprouts stems were plowed under in November and turned up the following spring; the collections were made about the end of June, 1922.'—R.L."

Phacidium Teucree Crouan—On *Teucrium canadense*, var. *littorale* at Cutchogue; determined by Dr. Charles E. Fairman.

Rhytisma monogramma B. & C.—Mattituck on *Vitis*; determined by Prof. Dearness.

Schizoxylon Berkeleyanum (Dur. & Mont.) Fckl.—On dead stems of *Akebia quinata* at Orient, a form of this species associated with *Phoma Akebiae* Dearn.

PYRENOMYCETES

Amphisphaeria papilla (Schw.) Ell.—On bark *Nyssa sylvatica* at Greenport; determined by Prof. Dearness.

Anthostomella ostiolata Ell.—On *Benzoin aestivale* at Greenport; determined by Prof. Dearness.

Botryosphaeria graphidea (B. & Rav.) Sacc.—On *Myrica carolinensis* at Southold; determined by Prof. Dearness.

- Caryospora callicarpa* (Curr.) Fckl.—Orient on rose galls; determined by Dr. Fairman.
- Diatrype minima* E. & E.—On *Clethra alnifolia* at Greenport; determined by Prof. Dearness.
- D. subferruginea* B. & Rav.—Cutchogue on *Quercus Prinus*; determined by Prof. Dearness.
- Diatrypella decorata* Nitsch.—On *Betula populifolia* at Greenport; determined by Prof. Dearness.
- D. nigro-annulata* (Grev.) Nitsch.—On *Alnus incana* at Southold; determined by Prof. Dearness.
- Diaporthe binocolata* (Ell.) Sacc., var. *Clethrae* var. nov.—Described by Prof. Dearness in Mycol. 16: 158. July 1924. "On dead stems of *Clethra alnifolia* L., Greenport, N. Y.; April 1923. Roy Latham: 1055."
- D. gallophila* Ell.—Orient on rose galls; determined by Dr. Fairman.
- D. phomaspora* (C. & E.) E. & E.—On *Myrica carolinensis* at Orient; determined by Dr. Fairman.
- Dichaena strumosa* Fr.—Laurel on *Quercus velutina*; determined by Prof. Dearness.
- Dothidea Baccharidis* Cke.—Prof. Dearness in Mycol. 16: 154-155. July 1924 says, "Examination of a collection of branches of *Baccharis halimifolia* L. made by Roy Latham, Orient, N. Y., May 1923, enables me to enlarge the description of *Dothidea Baccharidis* Cke. in Grev. XI: 108 and the addendum in Ell. & Evht., N. Am. Pyr., p. 612.
- The asci, p.sp., are $120 \times 10-11 \mu$ surrounded by long linear paraphyses some of them twice the length of the asci. Most but not all the sporidia are distinctly larger in the upper cell."
- Eriosphaeria alligata* (Fr.) Sacc.—Prof. Dearness in Mycol. 16: 156. July 1924 says, "An *Eriosphaeria* on decaying *Sassafras* trunk; Orient, N.Y., Jan. 1923. Roy Latham: 415. This fungus grew on the rotten wood under the loosened bark. It meets in large part the requirements of the description of *Eriosphaeria alligata* in Syst. Myc. 2: 445 and Syll. 1: 597. It has the yellowish, bi-nucleate, constricted sporidia and the deciduous ostiolum of the flat or umbilicate perithecium. It differs in the perithecia not being distinctly collabescent and possibly in sometimes having a dense subiculum. The most conspicuous feature in this collection is the red, rough, flat surface of the perithecia with the brown hyphal appendages, $200 \times 4-5 \mu$. Asci $75-90 \mu$; paraphyses numerous, branching, longer than the asci. Sporidia 1-septate; monostichous or in some of the asci sub-biseriate, $15-21 \times 4.5-6 \mu$.
- Another collection, at Orient, Feb., 1924, was under the loosened bark of *Sambucus* sp."
- Erysiphe Galeopsidis* DC.—Mattituck on *Scutellaria galericulata*; determined by Prof. Dearness.

- E. Polygoni* DC.—On cabbage, *Brassica oleracea*, var. *capitata* at Orient; determined by Prof. Dearness.
- Eutyphella capillata* E. & E.—Greenport on *Vitis*; determined by Prof. Dearness.
- E. glandulosa* (Cke.) E. & E.—Prof. Dearness in Mycol. **16**: 158. July 1924 says, "Near Orient, N. Y., Roy Latham has collected *Eutyphellae* on *Ailanthus*, *Akebia*, *Amelanchier*, *Robinia*, *Sassafras*, *Quercus*, and *Vitis* which can hardly be separated except by their hosts. And while they are referred to *Eutyphella glandulosa* Cke., this species is separated by rather obscure differences of essential characters from *Eu. deusta* E. & E., *Eu. capillata* E. & E., and *Eu. microcarpa* E. & E. Their sporidia range somewhat under $4 \times 1 \mu$; their asci, perithecia and stromata are similar; and their perithecia impress the wood."
- E. Platani* (Schw.) Sacc.—On *Platanus occidentalis* at Mattituck; determined by Mr. W. W. Diehl.
- E. stellulata* (Fr.) Sacc.—The form described under *Eutyphella tetraploa* (B. & C.) Sacc., on *Maclura pomifera* at Orient; determined by Prof. Dearness.
- Herpotrichia Rhenana* Fckl.—Greenport on *Sambucus canadensis*; determined by Dr. Fairman.
- Hypoderma commune* (Fr.) Duby—Orient on *Paeonia*; determined by Dr. Fairman.
- Hypoxyton Ravenelii* Rehm—On *Robinia Pseudo-Acacia* at Orient; determined by Prof. Dearness.
- Leptosphaeria dumetorum* Niessl.—Orient on *Baccharis halimifolia*; determined by Prof. Dearness.
- Lophiostoma pulveraceum* Sacc.—Involucral bracts of beechnuts, *Fagus grandifolia* at Cutchogue; determined by Dr. Fairman.
- Lophodermium pinastri* (Schrad.) Chev.—Peconic on *Pinus rigida*; determined by Prof. Dearness.
- Melanconis stilbostoma* (Fr.) Tul.—Orient on *Betula populifolia*; determined by Prof. Dearness.
- Melanomma pulvis-pyrius* (Pers.) Fckl.—On *Clethra alnifolia* at Greenport; determined by Dr. Fairman.
- Mycosphaerella indistincta* (Pk.) Lindau—Mattituck on *Thelypteris palustris*; determined by Prof. Dearness. (*Sphaerella indistincta* Pk.).
- M. spleniata* (Cke. & Pk.) House—Peconic on *Quercus alba*; determined by Prof. Dearness.
- Phyllachora vulgata* Theiss. & Syd.—Mattituck on *Muhlenbergia sylvatica*; determined by Prof. Dearness, who says, "a fine thing."
- Physalospora erratica* (C. & E.) Sacc.—Prof. Dearness in Mycol. **16**: 157. July 1924 says, "On dead apple branches, Orient, N. Y., Roy Latham: 969. If the identification of this collection is right the description in E. & E. N. Am. Pyr., p. 306, may be completed as follows: Perithecia 340μ , depressed-globose, merely perforating the epidermis and coming off with it. Asci clavate, $150-200 \times 15-20 \mu$."

- P. rhodina* B. & C.—Greenport on *Crataegus*; determined by Prof. Dearness.
- Pyrenophora calvescens* (Fr.) Sacc.—Orient on *Chenopodium album*; determined by Prof. Dearness.
- Rhopoglyphus clavisporus* (C. & P.) E. & E.—On stalks of *Zea Mays* at Mattituck; determined by Prof. Dearness.
- Rosellinia ligniaria* (Grev.) Sacc.—Prof. Dearness in Mycol. 16: 156. July 1924 says, "On bare blackened wood, a *Rosellinia* agreeing well with *ligniaria* except that the asci are only 45–60 μ instead of the usual 75–80 μ of the type. Sporidia 10 \times 7 μ . Perithecial bristles 15 to 40 mostly 20 \times 4 μ . Collected at Greenport, N. Y. Roy Latham: 551."
- Sphaerotheca Humuli* (DC.) Burr., var. *fuliginea* (Schlect) Salmon—Mattituck on *Bidens*; determined by Prof. Dearness, who says, "usually listed as *Sphaerotheca Castagnei* Lev."
- Valsa cenisia* DeNot.—Orient on *Juniperus virginiana*; determined by Prof. Dearness.
- V. clausa* C. & E.—Greenport on *Crataegus*; determined by Prof. Dearness.
- V. querna* Curr.—Orient on *Myrica carolinensis*; determined by Prof. Dearness.
- V. Toxici* (Schw.) E. & E.—On *Rhus Toxicodendron*, var. *radicans* at Orient; determined by Prof. Dearness.

HYPOMYCETES

- Botrytis Rileyi* Farl.—Prof. Dearness in Mycol. 16: 173. July 1924 says, "Rept. U. S. Commissioner of Agriculture, 1883, p. 121. On the clover looper—*Plathypena scabra*—Orient, N. Y., Sept., 1922. Roy Latham: 572. Determination confirmed by Dr. Roland Thaxter. 'This fungus killed thousands of larvae on beans this season (1922).'—R. L."
- Cercospora Boehmeriae* Pk.—On *Boehmeria cylindrica* at Mattituck; determined by Prof. Dearness.
- C. depazeoides* (Desm.) Sacc.—Mattituck on *Sambucus canadensis*; determined by Prof. Dearness.
- C. Nesaeae* E. & E.—Mattituck on *Decodon verticillatus*; determined by Prof. Dearness.
- C. tuberosa* Ell. & Kell.—On *Apios tuberosa* at Mattituck; determined by Prof. Dearness.
- Cladosporium graminum* Cda.—On grasses at Southold; determined by Prof. Dearness.
- Macrosporium asclepiadeum* Cke.—On *Asclepias* at Mattituck; determined by Dr. Fairman.
- Ramularia Brunellae* E. & E.—On *Prunella vulgaris* at Orient; determined by Prof. Dearness.
- R. Epilobii* Alesch.—On *Epilobium* at Mattituck; determined by Prof. Dearness.
- Sporotrichum agaricinum* Link.—On *Lactarius* at Greenport; determined by Prof. Dearness.

Trichosporium olivatum Sacc.—Orient on *Juniperus virginiana*; determined by Prof. Dearness.

Trimmatostroma Salicis Cda.—Mattituck on *Salix*; determined by Prof. Dearness.

MELANCONIALES

Colletotrichum Lindemuthianum (Sacc. & Magn.) Scribn.—On lima bean, *Phaseolus limensis*. (*Gloeosporium Lindemuthianum* Sacc. & Magn.)

C. lagenarium (Pass.) Ell. & Hals.—On cucumber, *Cucumis sativus* at Orient; determined by Prof. Dearness.

Gloeosporium Lathamii sp. nov.—Described by Prof. Dearness in Mycol. **16**: 168. July 1924. "On living leaves of *Quercus stellata* Wang. Orient, N. Y.; Sept., 1917. Roy Latham: 829. 'Conspicuous in the fall; one tree in the center of a wood was covered with it.'—R. L."

G. Sanguisorbae Fckl.—Mattituck on *Sanguisorba canadensis*; determined by Dr. Fairman.

Myxosporium Oenotherae sp. nov.—Described by Prof. Dearness in Mycol. **16**: 169. July 1924. "On dead capsules of *Oenothera biennis* L. Orient, N. Y.; Dec., 1922. Roy Latham: 514."

Pestalozzia scirpina Ell. & Mart.—On *Dulichium arundinaceum* at Orient; determined by Prof. Dearness, who says it agrees with the measurement of this species, which was first collected by Dr. J. T. Rothrock, on *Scirpus maritimus*, in Maryland in July 1884. It is described in Am. Nat. **19**: 76. Jan. 1885; and is No. 2181 of Ellis & Everhart's N. Am. Fungi, 1888–1889.

P. Syringae Oud.—Orient on *Diervilla (Weigela)*; determined by Prof. Dearness.

Septogloeum Celtidis sp. nov.—Described by Prof. Dearness in Mycol. **16**: 170. July 1924. "On leaves of *Celtis occidentalis* L. Orient, N. Y.; Oct., 1919. Roy Latham: 83."

SPHAEROPSIDEAE

Botryodiplodia compressa (Cke.) Sacc., f. *Toxicodendri*—Prof. Dearness in Mycol. **16**: 163. July 1924 describes this as a new form. "On *Rhus Toxicodendron* L. Orient, N. Y., March, 1923. Roy Latham: 962."

Dichromera Clethrae sp. nov.—Described by Prof. Dearness in Mycol. **16**: 164. July 1924. "On dead stems of *Clethra alnifolia* L. Greenport, N. Y., April, 1923. Roy Latham: 1044b. Externally like *Steganosporium fenestratum* (E. & E.) Sacc. on the same host."

Diplodina epicarya Fairm.—On pit of prune, *Prunus domestica* at Orient; determined by Prof. Dearness.

Discosia minima B. & C.—On nuts of *Carya glabra* at Mattituck; determined by Dr. Fairman.

Dothiorella Celtidis Pk.—Mattituck on *Celtis occidentalis*; determined by Dr. Fairman.

- Leptothyrella Lathamii* sp. nov.—Described by Prof. Dearness in Mycol. 16: 166. July, 1924. "On decorticated *Robinia Pseudo-Acacia* L. Orient, N. Y.; Feb., 1923. Roy Latham: 986."
- Leptothyrium Smilacis* sp. nov.—Described by Prof. Dearness in Mycol. 16: 165-166. July 1924. "On twigs and branchlets of *Smilax rotundifolia* L. Orient, N. Y.; Feb., 1920. Roy Latham: 1339."
- Macrophoma Oenotherae-biennis* sp. nov.—Described by Prof. Dearness in Mycol. 16: 160. July 1924. "On dead capsules and stems of the inflorescence of *Oenothera biennis* L.; Orient, N. Y.; Dec., 1922. Roy Latham: 514."
- Phoma acicola* (Lev.) Sacc.—Peconic on needles of *Pinus rigida*; determined by Dr. Fairman.
- P. acuum* C. & E.—Southold on needles of *Pinus rigida*; determined by both Dr. Fairman and Prof. Dearness.
- P. Akebiae* sp. nov.—Described by Prof. Dearness in Mycol. 16: 159-160. July 1924. "On dead stems of *Akebia quinata* Decaisne, associated with a form of *Schizoxylon Berkeleyanum*; Orient, N. Y.; May, 1923. R. Latham: 1124."
- Phoma cellidicola* Brun.—Mattituck on *Celtis occidentalis*; determined by Dr. Fairman.
- P. Dulcamarina* Sacc.—Greenport on *Solanum Dulcamara*; determined by Prof. Dearness.
- P. enteroleuca* Sacc.—On *Syringa vulgaris* at Orient; determined by Prof. Dearness.
- P. lingam* (Tode) Desm.—Common on brussels sprouts, *Brassica oleracea*, var. *gemmifera*.
- P. lirellata* Sacc.—Orient on *Paeonia*; determined by Dr. Fairman.
- P. spermoides* sp. nov.—Described by Prof. Dearness in Mycol. 16: 160. July 1924. "On dead stems of *Thalictrum* sp.; Orient, N. Y.; March, 1923. Roy Latham: 1130. *P. thalactrina* Sacc. has much larger spores."
- P. strobiligena* Desm.—On cones of *Pinus rigida*; determined by both Prof. Dearness and Dr. Fairman.
- Phyllosticta Clethricola* Ell. & Mart.—Greenport on *Clethra alnifolia*; determined by Prof. Dearness.
- P. cruenta* (Fr.) Kickx., var. *longispora* var. nov.—Described by Prof. Dearness in Mycol. 16: 159. July 1924. "On *Polygonatum biflorum* (Walt.) Ell. Orient, N. Y., Aug. 1923. R. Latham: 1342."
- P. Hamamelidis* (Cke.) Mart.—Greenport on *Hamamelis virginiana*; determined by Dr. Fairman.
- Septoria ampelina* B. & C.—On *Vitis* at Mattituck; determined by Prof. Dearness.
- S. noctiflorae* Ell. & Kell.—On *Lychnis alba* at Mattituck; determined by Prof. Dearness.
- S. Radiculae* sp. nov.—Described by Prof. Dearness in Mycol. 16: 165. July 1924. "On living leaves of *Radicula palustris* (L.) Moench. Southold, N. Y.; Sept., 1922. Roy Latham: 685."

- Sphaeropsis Akebiae* sp. nov.—Described by Prof. Dearness in Mycol. 16: 161. July 1924. "On dead stems of *Akebia quinata* Decaisne. June, 1923; Long Island, N. Y. R. Latham." Collected at Orient.
- S. Amelanchieris* sp. nov.—Described by Prof. Dearness in Mycol. 16: 161. July 1924. "On dead branches of *Amelanchier canadensis* (L.) Medic. Orient, N. Y., Dec. 1923. Roy Latham: 532. The conidia are longer and narrower than those of other *Sphaeropses* on pomaceous hosts with which they were compared." This species was also collected at Greenport.
- S. Celtidis* E. & E.—On *Celtis occidentalis* at Mattituck; determined by Dr. Fairman.
- S. insignis* B. & C.—On acorns of *Quercus alba* at Laurel; determined by Dr. Fairman.
- S. latispora* (Pk.) Dearn.—On *Smilax rotundifolia* at Orient; determined by Prof. Dearness.
- S. Platani* Pk.—Mattituck on *Platanus occidentalis*; determined by Prof. Dearness.
- S. punctum* C. & E.—Orient on *Diervilla (Weigela)*; determined by Prof. Dearness.
- S. Sambuci* Pk.—On *Sambucus canadensis* at Mattituck; determined by Prof. Dearness.
- S. Tecomae* sp. nov.—Described by Prof. Dearness in Mycol. 16: 162. July 1924. "On dead branches of *Tecoma radicans* (L.) Juss. Orient, N. Y., Jan., 1923. R. Latham: 672, 1185."
- Vermicularia Polygonati* Schw.—Orient on *Smilacina stellata*; determined by Prof. Dearness.

USTILAGINACEAE

- Cintractia Montagnei* (Tul.) Magn.—Orient on *Rynchospora glomerata*; determined by Dr. H. S. Jackson.
- Urocystis Anemones* (Pers.) Wint.—On *Anemone quinquefolia* at Orient; determined by Dr. Jackson.

PUCCINIACEAE

- Gymnosporangium Botryapites* (Schw.) Kern—On *Chamaecyparis thyoides* at Laurel; determined by Prof. Dearness.
- Puccinia hieraciata* (Schw.) Jackson.—On *Carex* at Greenport; determined by Dr. Jackson.
- Uromyces Eleocharidis* Arth.—On *Eleocharis obtusa* at Orient; determined by Dr. Jackson.
- U. Rynchosporae* (Ellis) Arth.—Orient on *Rynchospora glomerata*; determined by Dr. Jackson.
- U. verruculosus* Schroet.—Greenport on *Lychnis alba*; determined by Dr. Jackson, who says, "very rare, has only previously been reported from Michigan, and is presumably an introduced rust, as it is common in Europe."

THELEPHORACEAE

Cyphella fasciculata (Schw.) B. & C.—Peconic on *Alnus*; determined by Dr. E. A. Burt.

HYDNACEAE

Grandinia tuberculata B. & C.—On *Acer* at Greenport; determined by Prof. Dearness.

POLYPORACEAE

Boletinus decipiens (B. & C.) Pk.—Sandy woods at Southold; determined by Prof. Dearness. (*Boletinus Berkeleyi* Murrill.)

Boletus luteus L.—Low sandy woods at Southold; determined by Prof. Dearness.

AGARICACEAE

Collybia acervata Fr.—Low woods at Southold; determined by Prof. Dearness.

Pleurotus applicatus (Batsch) Fr.—Old trunks of *Pinus* at Cutchogue; determined by Prof. Dearness.

P. spathulatus (Fr.) Pk.—Earth in rich woods at Greenport; determined by Dr. C. G. Lloyd, and reported in *Mycol. Notes*, No. 72: 1296 June 1924.

STERILE MYCELIUM

Rhizomorpha subcorticalis Pers.—Greenport on *Liriodendron Tulipifera*; determined by Prof. Dearness.

LICHENES*

Alectoria chalybeiformis (L.) S. F. Gray—Orient.

Biatorella clavus (Lam. & DC.) Th. Fr.—On rocks at Orient.

Bilimbia sphaeroides (Dicks.) Koerb.—On bark of *Acer rubrum* at Greenport.

Cladonia crispata (Ach.) Flot., var. *elegans* (Del.) Wainio.—Sandy soil at Orient,

C. pityrea (Flk.) Fr.—Sandy soil at Orient.

C. uncialis (L.) Weber, f. *humilis* Mass.—Sandy soil at Orient.

C. verticillata (Hoffm.) Flk., var. *evoluta* Th. Fr.—Rotten wood in swamps at Laurel.

Nephromopsis ciliaris (Ach.) Hue—Trees at Greenport. (*Cetraria ciliaris* Ach.)

Parmelia cetrata Ach.—Bark of *Juniperus virginiana* at Orient.

P. verrucilifera Nyl.—Bark of *Quercus* at Orient; and on *Acer* at Greenport.

Physcia setosa (Ach.) Nyl.—On *Acer* at Greenport.

Polyblastiopsis fallax (Nyl.)—Orient on *Myrica carolinensis*; determined by Dr. Bruce Fink, through Dr. Thaxter.

Rhizocarpon confervoides DC.—On rock at Orient. (*Rhizocarpon petraea* (Wulf.) Tuck. in part.

* Unless otherwise stated the Lichens were determined by Dr. C. C. Plitt and are deposited in the Herbarium of the Sullivant Moss Society.

HEPATICAЕ*

- Bazzania trilobata* (L.) S. F. Gray—Swamps at Laurel.
Cephalozia bicuspidata (L.) Dum.—Swamps at Laurel.
C. catenulata (Hübner) Spruce—Bank in a swamp at Southold.
Jamesoniella autumnalis (DC.) Steph.—Laurel.
Lepidozia sylvatica Evans—Old logs in a swamp at Greenport.
Odontoschisma denudatum (Mert.) Dumort.—Bank in a swamp at Greenport.
Riccardia latifrons Lindb.—Banks in a swamp at Southold.
R. multifida (L.) S. F. Gray—Decayed wood at Southold.

MUSCI†

- Aulacomnium heterostichum* (Hedw.) B. & S.—Base of trees in a swamp at Laurel.
Brachythecium salebrosum (Hoffm.) B. & S.—Swamps at Mattituck.
Bryum argenteum L.—Orient on bare soil in lawns.
Calliergon cuspidatum (L.) Kindb.—Swamp at Laurel.
C. Schreberi (Willd.) Grout—Swamp at Laurel.
Fontinalis Novae-Angliae Sull.—Swamp at Greenport.
Mnium punctatum L.—Swamp at Laurel.
M. punctatum, var. *elatum* Schimp.—Swamp at Laurel.
Orthotrichum pusillum Mitt.—Bark at *Quercus* at Mattituck.
O. sordidum Sull. & Lesq.—Laurel on *Quercus*.
Thuidium microphyllum (Sw.) Best—Low woods at Mattituck.

SPERMATOPHYTA*

* Records of plants collected on Shelter Island, Plum Island and Fisher's Island are included in this list.

- Chamaecypris thyoides* (L.) B.S.P.—Swamp at Laurel, the host of *Gymnosporangium Botryopites*.
Najas gracillima (A. Br.) Magnus—Sandy pond at Southold; determined at the Bureau of Plant Industry, Washington.
Potamogeton heterophyllus Schreb.—Sandy pond at Southold; determined at the Bureau of Plant Industry.
P. natans L.—Swamp at Greenport; determined by Mr. Norman Taylor.
P. pulcher Tuck.—Swamp at Greenport; determined by Mr. Wm. C. Ferguson.
Elodea Nuttallii (Planch.) St. John—In a pond at Greenport; determined at the N. Y. Botanical Garden.
Distichlis spicata (L.) Greene—Salt marshes, Shelter Island; collected by Dr. H. D. House, No. 9703 of August 15, 1923.
Paspalum psammophilum Nash—"Fisher's Island, Taylor (Fl. Vic. N. Y. 100, 1915)." N. Y. State Mus. Bull. 254: 70. 1924.

* The Hepatics were determined by Dr. G. H. Conklin and are deposited in the Herbarium of the Sullivant Moss Society.

† The mosses were determined by Mr. Geo. B. Kaiser and are deposited in the Herbarium of the Sullivant Moss Society.

- Spartina patens* (Ait.) Muhl., var. *juncea* (Mx.) Hitchc.—Salt marshes, Shelter Island; collected by Dr. House, No. 9702.
- Carex anceps* Muhl.—Not rare in dry woods at Laurel; determined by Mr. Ferguson. (*Carex laxiflora* Lam., var. *patulifolia* (Dewey) Carey.)
- C. annectens* Bicknell—Wet woods, Greenport; determined by Mr. Ferguson.
- C. convoluta* Mackenz.—Wet woods at Laurel; determined by Mr. Ferguson. (*Carex rosea* Schkr., var. *pusilla* Pk.)
- C. echinata* Murr., var. *cephalantha* Bailey—Swamp at Cutchogue; determined by Mr. Ferguson. (*Carex cephalantha* (Bailey) Bickn.)
- C. Grayii* Carey—Rich woods at Greenport; determined by Mr. G. P. Van Eseltine.
- C. Longii* Mackenz.—Rich ground at Greenport; determined by Mr. Ferguson. (*Carex albolutescens* Schwein.)
- C. normalis* Mackenz.—Rich woods at Greenport; determined by Mr. Van Eseltine. (*Carex mirabilis* Dewey.)
- C. striata* Mx., var. *brevis* Bailey—Bog at Laurel; determined by Mr. Ferguson. (*Carex Walteriana* Bailey.)
- C. tribuloides* Wahl.—Low woods at Greenport; determined by Mr. Ferguson.
- Eleocharis palustris* (L.) R. & S., var. *glaucescens* (Willd.) Gray—Greenport; determined by Mr. Ferguson.
- E. rostellata* Torr.—Salt marshes, Cutchogue and Peconic; determined by Mr. Ferguson.
- Scirpus nanus* Spreng.—Mud on salt marshes at Bay View, Greenport and Orient; determined by Mr. Ferguson.
- Orontium aquaticum* L.—A few plants in a swamp near Laurel.
- Juncus canadensis* J. Gay—Margin of salt marsh, Shelter Island; collected by Dr. House, No. 9681.
- J. dichotomus* Ell.—Dr. Charles B. Graves in Bull. Torr. Bot. Club 23: 59. Feb. 1896 says, "In August, 1892, the writer discovered *Juncus dichotomus* growing upon Plum Island, and during the past summer found it to be not rare upon Fisher's Island."
- Pogonia verticillata* (Willd.) Nutt.—Miss Margaret A. Fay found several hundred plants in moist woods at Southold. Mrs. William Fay collected it in rich woods at Greenport.
- Polygonum aviculare* L., var. *angustissimum* Meisn.—Waste ground, Orient.; determined by Mr. Ferguson. (*Polygonum neglectum* Besser.)
- Atriplex arenaria* Nutt.—Sandy and gravelly shores, Shelter Island; collected by Dr. House, No. 9690a.
- Suaeda linearis* (Ell.) Moq.—Salt marshes, Shelter Island; collected by Dr. House, No. 9691.
- Spergularia salina* J. & C. Presl.—Salt marshes, Shelter Island; collected by Dr. House, No. 9694. (*Tissa marina* (L.) Britton.)
- Brasenia Schreberi* Gmel.—Rare in a pond at Laurel.
- Ranunculus micranthus* Nutt.—Wet sands, Fisher's Island; determined at N.Y. Botanical Garden.
- Diplotaxis tenuifolia* (L.) DC.—Waste place at Orient.
- Thlaspi arvense* L.—Cultivated ground at Orient.

- Rubus odoratus* L.—Rare in rich woods at Greenport.
- Cassia Chamaecrista* L.—Dry fields, Shelter Island; collected by Dr. House, No. 9680.
- Lathyrus maritimus* (L.) Bigel.—Sandy soil near the shore, Shelter Island; collected by Dr. House, No. 9683.
- Lespedeza capitata* Mx., var. *velutina* (Bicknell) Fernald—Upper border of salt marshes at Orient; determined by Mr. Ferguson. (*Lespedeza Bicknellii* House.)
- Strophostyles umbellata* (Muhl.) Britton—Salt marshes at Bay View and Greenport.
- Trifolium arvense* L.—Dry fields, Shelter Island; collected by Dr. House, No. 9676.
- Euphorbia glyptosperma* Engelm.—Dr. Graves, in Bull. Torr. Bot. Club 23: 59. Feb. 1896 says in 1895, he found near the east end of Fisher's Island "a small colony of *Euphorbia glyptosperma* Engelm. far out of its cited range."
- Callitriche deflexa* A. Br., var. *Austini* (Engelm.) Hegelm.—Thin bare soil mostly along wagon roads, rather common at Southold. Rare on dryer soil in woods at Greenport; determined at N. Y. Botanical Garden.
- Rhus copallina* L.—Dry banks, Shelter Island; collected by Dr. House, No. 9697.
- R. typhina* L.—Rare on hills at Mattituck.
- Helianthemum Bicknellii* Fernald—Mattituck; determined at the Bureau of Plant Industry.
- Viola sagittata* Ait.—Moist sandy soil at Southold; determined by Mr. Ferguson.
- Oenothera laciniata* Hill—Local in dry soil, Laurel.
- Myriophyllum humile* (Raf.) Morong—Fisher's Island, Sept. 15, 1891: collected by Rev. J. L. Zabriskie. (*Myriophyllum ambiguum* Nutt., var. *limosum* Nutt.)
- Aralia hispida* Vent.—Sandy soil, rare at Southold; determined by Mr. Ferguson.
- Ligusticum scoticum* L.—Dr. Graves in Bull. Torr. Bot. Club 23: 59. Feb. 1896 says, "*Ligusticum scoticum* L. has been known for some years to be frequent upon Fisher's Island; in August, 1895, a station for it was found on the north shore of Plum Island."
- Zizia aurea* (L.) Koch—Fisher's Island; determined by Mr. Ferguson.
- Z. cordata* (Walt.) DC.—Rare on Fisher's Island; determined by Mr. Ferguson.
- Limonium trichogonum* Blake—Salt marshes, Shelter Island; collected by Dr. House, No. 9668.
- Fraxinus pennsylvanica* Marsh.—"Greenport, swampy woods." Mr. Ferguson in Bull. Torr. Bot. Club 51: 195. May 1924.
- Bartonia paniculata* (Mx.) Robins.—Sandy swamp, Southold, September 30, 1923. Plants very slender, leaf-scales and branches alternate, corolla lobes sharp pointed. Growing with *Bartonia virginica* (L.) BSP.

- Asclepias rubra* L.—Dry hills, East Marion, rare; determined by Dr. John K. Small.
- Cuscuta polygonorum* Engelm.—Sandy swamp at Mattituck; determined at the Bureau of Plant Industry as *Cuscuta obtusiflora* HBK.
- Lamium maculatum* L.—Fields at Cutchogue; collected by Mrs. Fay.
- Marrubium vulgare* L.—Dry waste places, Laurel; determined by Dr. Small.
- Mentha longifolia* (L.) Huds.—Roadsides, Southold; collected by Mrs. Fay.
- Thymus Serpyllum* L.—Dry hills, Fisher's Island; determined by Dr. Small.
- Ilysanthes inaequalis* (Walt.) Pennell—Sandy shore of a pond at Laurel; determined by Mr. Ferguson. (*Ilysanthes anagallidea* (Mx.) Robins.)
- Plantago decipiens* Barneoud—Salt marshes, Shelter Island; collected by Dr. House, No. 9692.
- P. elongata* Pursh—Dr. Graves in Bull. Torr. Bot. Club 23: 59. Feb. 1896 says, "In 1892 *Plantago elongata* Pursh (*P. pusilla* Nutt.) was detected growing on the south side of Fisher's Island."
- Jasione montana* L.—All around the borders of one field, at Laurel, covering an acre; and evidently is spreading.
- Aster concolor* L.—Sandy ground at Bay View.
- A. ericoides* L., var. *villosus* T. & G.—Dry woods, Laurel; determined by Mr. Ferguson.
- A. nemoralis* Ait.—Sandy swamp at Laurel, rare; determined by Mr. Ferguson.
- A. paniculatus* Lam.—Salt marshes, Shelter Island; collected by Dr. House, No. 9686.
- Centaurea vochinensis* Bernh.—Greenport and Bay View; collected by Mrs. Fay and determined by Mr. Ferguson.
- Solidago Michauxii* House—"Cutchogue, Latham" (*Solidago minor* (Mx.) Fernald).
- S. serotina* Ait., var. *gigantea* (Ait.) Gray—Sandy swamp, Mattituck; determined by Mr. —————.

BOOK REVIEWS

BIBLIOGRAPHY OF AMERICAN NATURAL HISTORY*

This volume is the first of three which, when completed, will constitute the most important contribution ever made to the history of natural science in the United States. The entire work is strictly bibliographic, and consequently intended solely as a work of reference, but it supplies the key needed to unlock

* MEISEL, MAX. A bibliography of American natural history: the pioneer century, 1769-1865. Volume I. An annotated bibliography of . . . the history, biography and bibliography . . . published up to 1924; . . . and a bibliography of biographies. 244 pages. Premier Publishing Co., 626 [now 658] Broadway, Brooklyn, N. Y., [November 1924.] Price (cloth), \$5.00, postpaid.